

ISO 9001 : 2015  
Certified Company

# FLOREX GREEN<sup>®</sup>

FIT है HIT है



uPVC | cPVC | SWR | Agriculture | Garden Pipe  
PTMT | Bathroom Accessories

## Pipe & Fittings



# OUR VISION

## Core Purpose:

To ease our customers lives by providing trusted quality solutions with consistent services there by partnering with their success

## Core Values:

### 1. Commitment :

- **Dedication to Quality:** A steadfast dedication to producing high-quality, durable pipes and fittings that consistently meet industry standards.
- **Reliability:** Ensuring timely delivery, seamless supply chain operations, and post-sales support to build long-term trust with customers.
- **Responsibility:** Owning every aspect of the business, from product development to customer service, and standing by promises and commitments

### 2. Customer first :

- **Prioritizing Customer Needs:** Focusing on understanding and addressing the unique requirements of each customer, offering tailored solutions for different applications and and superior after-sales support.

### 3. Respect & Teamwork :

- **Mutual Respect:** Encouraging a workplace culture where every team member is valued, heard, and respected, fostering an environment of equality and inclusivity.

### 4. Relationship :

- **Building Trust:** Establishing strong, lasting relationships with suppliers, distributors, employees, and customers by being honest, reliable, and transparent.

### 5. Learning & Growth mindset :

- **Continuous Improvement:** Encouraging a culture where every employee is motivated to learn, adapt, and improve their skills to drive personal and organizational growth.
- **Embracing Challenges:** Viewing challenges as opportunities for learning, growth, and innovation.

### 6. Innovation :

- **R&D Focus:** Investing in research and development to continuously improve products and manufacturing processes, ensuring cutting-edge solutions in the pipes and fittings industry.
- **Sustainability:** Innovating with a focus on sustainable materials and practices, reducing environmental impact while improving product quality.



# BHAG

## Big Hairy Audacious Goal

To Become 3000 Cr. Company by 2035



# OUR QUALITY,

## YOUR TRUST



# ABOUT US...

Flores Green is the brand of flores Green(india) Pvt. Ltd. based at Rajkot, This Company is in the PVC sector since 2012 and is growing exponentially in this field. We are one of the fastest growing organization in the region.

Flores Green Pipes is Overwhelmed in The Market for offering qualitative products at the best competitive prices. The range of products varies from 15mm to 100mm in uPVC & cPVC Pipe & Fittings. The range of PVC Pipes & Fittings varies from 20mm to 160mm while in SWR Pipe & Fittings range varies 75mm to 160mm. To maintain the quality of product we have well equipped laboratory. Apart from that our quality executives regularly checks from initial process of deploying Raw material to final stage of dispatching finished products. We are having BIS (BUREAU OF INDIAN STANDARD) Certification for CPVC Pipes & Fittings, SWR & PVC Pipes & Fittings Moreover company is also certified by ISO 9001:2015 for Quality Management System.



# Technical Specification

## c-PVC ISI PLUMBING PIPE SYSTEM AS PER 15:15778

IS : 15778



CML - 7600180409

Nominal Bore	Nominal Size	Nominal Outside Diameter	SDR - 11 Wall Thickness		Working Pressure at		SDR - 13.5 Wall Thickness		Working Pressure at	
			Min.	Max.	20° C (Cold)	90° C (Hot)	Min.	Max.	20° C (Cold)	90° C (Hot)
(Inch)	(mm)	(mm)	(mm)	(mm)	Kg/Cm <sup>2</sup>		(mm)	(mm)	Kg/Cm <sup>2</sup>	
½	15	15.90	1.75	1.90	28.10	7.00	1.45	1.60	21.80	5.50
¾	20	22.30	2.05	2.20	28.10	7.00	1.75	1.90	21.80	5.50
1	25	28.65	2.65	2.80	28.10	7.00	2.15	2.30	21.80	5.50
1¼	32	34.90	3.25	3.40	28.10	7.00	2.65	2.80	21.80	5.50
1½	40	41.35	3.85	4.00	28.10	7.00	3.15	3.30	21.80	5.50
2	50	54.00	4.95	5.10	28.10	7.00	4.05	4.20	21.80	5.50

## ASTM u-PVC PLUMBING SYSTEM

Nominal Bore	Nominal Size	Nominal Outside Diameter	SCH - 40			SCH - 80		
			Wall Thickness		Working Pressure	Wall Thickness		Working Pressure
(Inch)	(mm)	(mm)	Minimum (mm)	Maximum (mm)	Kg/Cm <sup>2</sup>	Minimum (mm)	Maximum (mm)	Kg/Cm <sup>2</sup>
½	15	21.35	2.30	2.60	41.40	3.05	3.35	58.60
¾	20	26.70	2.35	2.65	33.10	3.20	3.50	47.60
1	25	33.35	3.00	3.30	31.00	3.60	3.90	43.40
1¼	32	42.20	3.10	3.40	25.50	4.10	4.40	35.90
1½	40	48.30	3.15	3.45	22.80	4.20	4.50	32.40
2	50	60.25	3.20	3.50	19.30	4.40	4.70	27.60

## SWR RING TYPE & PASTING TYPE AS PER IS:13592

IS : 13592



CML - 7600148312

Pipe Size (mm)	Socket Length (mm)	Mean Outside Diameter (mm)		Wall Thickness				Fitting Size (mm)	Wall Thickness at Plain End (mm) Minimum	Wall Thickness at Socket End (mm) Minimum e2	Wall Thickness at Socket End (mm) Minimum e3	Max. Length of Beading & Neck A	Min. Neck Length of B	Min. Length of Beading of B	Inside Diameter of Socket at Midpoint (mm)		Inside Diameter of Socket at Midpoint (mm)	
				TYPE "A"		TYPE "B"									Minimum	Maximum	Minimum	Maximum
		Minimum	Maximum	Minimum	Maximum	Minimum	Maximum								Minimum	Maximum	Minimum	Maximum
75	40.00	75.00	75.30	1.80	2.20	3.20	3.80	75	3.20	2.90	2.40	20	5	25	75.10	76.20	75.00	75.30
90	46.00	90.00	90.30	1.90	2.30	3.20	3.80	90	3.20	2.90	2.40	23	5	28	90.10	91.20	90.00	90.30
110	48.00	110.00	110.40	2.20	2.70	3.20	3.80	110	3.20	2.90	2.40	26	6	32	110.10	111.30	110.00	110.40
160	58.00	160.00	160.50	3.80	3.80	4.00	4.60	160	3.50	2.90	2.40	29	6	32	160.10	160.00	160.00	160.40

IS : 4985



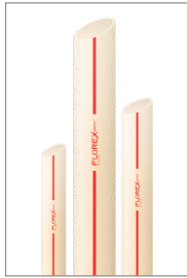
CML - 7600181916

## AGRICULTURE PIPING SYSTEM AS PER IS:4985

Nominal Bore	Socket Length	Mean Outside Diameter		Outside Diameter at Any Point		Wall Thickness					
						Class 2.5 kg/Cm <sup>2</sup>		Class 2/0.40 Mpa/ 4.0 Kg./Cm <sup>2</sup>		Class 3/0.60 Mpa/ 6.0 Kg./Cm <sup>2</sup>	
		Minimum	Maximum	Minimum	Maximum	Minimum	Maximum	Minimum	Maximum	Minimum	Maximum
40	26.00	40.00	40.30	39.50	40.50	-	-	-	-	1.40	1.80
50	31.00	50.00	50.30	49.40	50.60	-	-	-	-	1.70	2.10
63	38.00	63.00	63.30	62.20	63.80	-	-	1.50	1.90	2.20	2.70
75	44.00	75.00	75.30	74.10	75.90	-	-	1.80	2.20	2.60	3.10
90	51.00	90.00	90.30	88.90	91.10	1.30	1.70	2.10	2.60	3.10	3.70
110	61.00	110.00	110.40	108.60	111.40	1.60	2.00	2.50	3.00	3.70	4.30
140	76.00	140.00	140.50	138.30	141.70	2.00	2.40	3.20	3.80	4.80	5.50
160	86.00	160.00	160.50	158.00	162.00	2.30	2.80	3.70	4.30	5.40	6.20
200	106.00	200.00	200.60	197.60	202.40	2.90	3.40	4.60	5.30	6.80	7.90



## c-PVC PLUMBING PIPE



SDR 11 - 3 Mtr.				
Pro.Co.	Inch	mm	Packing	Rate/pcs
PC01	¾"	20	60 pcs	299.00
PC02	1"	25	40 pcs	490.00
PC03	1¼"	32	30 pcs	760.00
PC04	1½"	40	20 pcs	1086.00
PC05	2"	50	10 pcs	1650.00



SDR 13.5 - 3 Mtr.				
Pro.Co.	Inch	mm	Packing	Rate/pcs
PC06	½"	15	100 pcs	198.00
PC07	¾"	20	60 pcs	268.00
PC08	1"	25	40 pcs	422.00
PC09	1¼"	32	30 pcs	630.00
PC10	1½"	40	20 pcs	890.00
PC11	2"	50	10 pcs	1380.00

IS : 17546



CML - 7600207916

## c-PVC BRASS FITTINGS



Pro. Code	Inch	Inner Pack	Bag Packing (Pcs.)	Rate/ pcs
BRASS ELBLOW				
CF001	¾" x ½"	40 x 8	320	49.00
CF002	1" x ½"	30 x 8	240	70.60
CF003	1"	15 x 10	150	193.50



BRASS M.T.A.				
Pro. Code	Inch	Inner Pack	Bag Packing (Pcs.)	Rate/ pcs
CF007	¾"	40 x 7	280	104.00
CF008	1"	20 x 9	180	145.60
CF009	1¼"	10 x 12	120	291.00
CF010	1½"	10 x 8	80	526.00
CF106	2"	6 x 8	48	591.00



REDUCER BRASS M.T.A.				
Pro. Code	Inch	Inner Pack	Bag Packing (Pcs.)	Rate/ pcs
CF015	¾" x ½"	40 x 9	360	62.50
CF016	1" x ½"	30 x 10	300	93.50
CF017	1" x ¾"	30 x 9	270	137.00



M.T.A. (HEXAGON)				
Pro. Code	Inch	Inner Pack	Bag Packing (Pcs.)	Rate/ pcs
CF021	¾" x ½"	25 x 10	250	105.00
CF022	1"	20 x 7	140	234.00



CPVC MIXTURE				
Pro. Code	Inch	Inner Pack	Bag Packing (Pcs.)	Rate/ pcs
CF025	¾" x ½"	1 Pcs.	50	286.00



AS PER ASTM F - 441 (SCH-40)				
Pro.Co.	Inch	mm	Packing	Rate/pcs
PC012	2½"	65	7 pcs	2900.00
PC013	3"	80	5 pcs	3800.00
PC014	4"	100	4 pcs	5500.00



Pro. Code	Inch	Inner Pack	Bag Packing (Pcs.)	Rate/ pcs
BRASS TEE				
CF004	¾" x ½"	30 x 9	270	57.00
CF005	1" x ½"	20 x 8	160	88.50
CF006	1"	15 x 10	150	229.00



BRASS F.T.A.				
Pro. Code	Inch	Inner Pack	Bag Packing (Pcs.)	Rate/ pcs
CF011	¾"	40 x 8	320	83.00
CF012	1"	20 x 10	200	119.50
CF013	1¼"	10 x 12	120	244.40
CF014	1½"	10 x 8	80	457.50
CF107	2"	6 x 8	48	482.50



REDUCER BRASS F.T.A.				
Pro. Code	Inch	Inner Pack	Bag Packing (Pcs.)	Rate/ pcs
CF018	¾" x ½"	40 x 9	360	48.00
CF019	1" x ½"	30 x 10	300	66.50
CF020	1" x ¾"	30 x 10	300	104.00



F.T.A. (HEXAGON)				
Pro. Code	Inch	Inner Pack	Bag Packing (Pcs.)	Rate/ pcs
CF023	¾" x ½"	25X10=250	750	105.00
CF024	1"	20X7=140	420	234.00

**c-PVC PLAIN FITTINGS (As per ASTM D-2846) - (SDR:11)**



Pro. Code	Inch	Inner Pack	Master Packing (Pcs.)	Rate/ pcs
<b>ELBOW</b>				
CF026	¾"	100 x 14	1400	12.00
CF027	1"	50 x 14	700	26.00
CF028	1¼"	35 x 10	350	50.00
CF029	1½"	20 x 10	200	88.00
CF099	2"	8 x 12	96	210.00
CF119	2½"	-	24	300.00
CF120	3"	-	16	452.00
CF148	4"	-	8	708.00

**SCH: 40  
NEW**



Pro. Code	Inch	Inner Pack	Master Packing (Pcs.)	Rate/ pcs
<b>REDUCER ELBOW</b>				
CF030	1" x ¾"	50 x 14	700	28.00
CF031	1¼" x ¾"	50 x 10	500	53.00
CF032	1¼" x 1"	40 x 10	400	53.00
CF033	1½" x 1"	20 x 10	200	95.00



Pro. Code	Inch	Inner Pack	Master Packing (Pcs.)	Rate/ pcs
<b>COUPLER</b>				
CF034	¾"	200 x 10	2000	8.00
CF035	1"	100 x 10	1000	14.00
CF036	1¼"	50 x 12	600	34.00
CF037	1½"	35 x 10	350	58.00
CF101	2"	14 x 12	168	116.00
CF121	2½"	-	56	200.00
CF122	3"	-	30	284.00
CF149	4"	-	18	472.00

**SCH: 40**



Pro. Code	Inch	Inner Pack	Master Packing (Pcs.)	Rate/ pcs
<b>REDUCER COUPLER</b>				
CF038	1" x ¾"	100 x 14	1400	17.00
CF039	1¼" x ¾"	60 x 12	720	38.00
CF040	1¼" x 1"	60 x 12	720	38.00
CF041	1½" x 1"	35 x 12	420	58.00
CF123	2" x 1"	25 x 12	300	116.00



Pro. Code	Inch	Inner Pack	Master Packing (Pcs.)	Rate/ pcs
<b>TEE</b>				
CF042	¾"	80 x 12	960	17.00
CF043	1"	40 x 12	480	32.00
CF044	1¼"	25 x 10	250	66.00
CF045	1½"	15 x 10	150	120.00
CF100	2"	6 x 12	72	240.00
CF124	2½"	-	17	420.00
CF125	3"	-	11	612.00
CF150	4"	-	7	1062.00

**SCH: 40**



Pro. Code	Inch	Inner Pack	Master Packing (Pcs.)	Rate/ pcs
<b>REDUCER TEE</b>				
CF046	1" x ¾"	50 x 12	600	34.00
CF047	1¼" x ¾"	30 x 10	300	75.00
CF048	1¼" x 1"	25 x 10	250	75.00
CF049	1½" x 1"	15 x 10	150	125.00
CF145	2 x 1"	6 x 12	72	240.00
CF146	2 x 1½"	6 x 12	72	240.00



Pro. Code	Inch	Inner Pack	Master Packing (Pcs.)	Rate/ pcs
<b>UNION</b>				
CF050	¾"	50 x 14	700	45.00
CF051	1"	40 x 12	480	73.00
CF052	1¼"	25 x 12	300	120.00
CF053	1½"	20 x 10	200	180.00
CF102	2"	8 x 12	96	325.00
CF126	2½"			
CF127	3"			

**SCH: 40**



Pro. Code	Inch	Inner Pack	Master Packing (Pcs.)	Rate/ pcs
<b>45° ELBOW</b>				
CF054	¾"	100 x 14	1400	17.00
CF055	1"	50 x 14	700	28.00
CF056	1¼"	50 x 10	500	50.00
CF057	1½"	25 x 12	300	100.00
CF128	2"	12 x 12	144	200.00
CF129	2½"	-	32	260.00
CF130	3"	-	22	374.00
CF147	4"	-	9	694.00

**SCH: 40**



Pro. Code	Inch	Inner Pack	Master Packing (Pcs.)	Rate/ pcs
<b>M.T.A.</b>				
CF058	¾"	100 x 16	1600	14.00
CF059	1"	100 x 12	1200	26.00
CF060	¾" x ½"	100 x 10	1000	14.00
CF061	1¼"	50 x 12	600	45.00
CF062	1½"	20 x 18	360	68.00
CF103	2"	20 x 10	200	120.00

**SCH: 40**



Pro. Code	Inch	Inner Pack	Master Packing (Pcs.)	Rate/ pcs
<b>F.T.A.</b>				
CF063	¾"	100 x 16	1600	15.00
CF064	1"	50 x 16	800	30.00
CF065	¾" x ½"	100 x 8	800	15.00
CF066	1¼"	30 x 12	360	66.00
CF067	1½"	25 x 12	300	88.00
CF104	2"	15 x 10	150	130.00



Pro. Code	Inch	Inner Pack	Master Packing (Pcs.)	Rate/ pcs
<b>END CAP</b>				
CF068	¾"	100 x 30	3000	7.00
CF069	1"	80 x 20	1600	11.00
CF070	1¼"	100 x 10	1000	27.00
CF071	1½"	35 x 16	560	42.00
CF105	2"	25 x 12	300	93.00
CF131	2½"			
CF132	3"			

**SCH: 40**



Pro. Code	Inch	Inner Pack	Master Packing (Pcs.)	Rate/ pcs
<b>TANK NIPPLE</b>				
CF072	¾"	50 x 12	600	39.00
CF073	1"	35 x 12	420	56.00
CF074	1¼"	20 x 14	280	102.00
CF075	1½"	15 x 12	180	150.00
CF118	2"	10 x 12	120	210.00

**c-PVC PLAIN FITTINGS (As Per ASTM D-2846)**



Pro. Code	Inch	Inner Pack	Master Packing (Pcs.)	Rate/ pcs
<b>STEP OVER BEND (MOULDED)</b>				
CF134	¾"	40 x 12	480	59.00
CF135	1"	30 x 10	300	71.00
CF136	1¼"	15 x 10	150	134.50



Pro. Code	Inch	Inner Pack	Master Packing (Pcs.)	Rate/ pcs
<b>STEP OVER BEND</b>				
CF082	¾"	30 x 16	480	40.00
CF083	1"	20 x 14	280	65.00



Pro. Code	Inch	Inner Pack	Master Packing (Pcs.)	Rate/ pcs
<b>NON RETURN VALVE</b>				
CF137	¾"	15 x 10	150	189.00
CF138	1"	15 x 10	150	198.50
CF139	1¼"	15 x 10	150	203.00



Pro. Code	Inch	Master Box Pack	Rate/pcs
<b>C-BALL VALVE (Original)</b>			
CF090	¾"	1 x 90=90	150.00
CF091	1"	1 x 50=50	225.00
CF087	1¼"	1 x 33=33	396.00
CF088	1½"	1 x 22=22	671.00
CF089	2"	1 x 12=12	951.00



Pro. Code	Inch	Master Box Pack	Rate/Pcs
<b>cPVC - FUSION CONCEALED VALVE</b>			
CF095	¾"	24	664.50
CF096	1"	24	702.50



Pro. Code	Inch	Inner Pack	Master Packing (Pcs.)	Rate/ pcs
<b>BEND</b>				
CF084	¾"	40 x 12	480	36.00
CF085	1"	20 x 12	240	53.00



Pro. Code	Inch	Inner Pack	Master Packing (Pcs.)	Rate/ pcs
<b>TRANSACTION BUSH uPVC to cPVC</b>				
CF076	¾" x ¾"	100 x 10	1000	11.50
CF077	1" x 1"	80 x 8	640	29.00



Pro. Code	Inch	Inner Pack	Master Packing (Pcs.)	Rate/ pcs
<b>BUSH</b>				
CF078	1" x ¾"	100 x 10	1000	13.00
CF079	1¼" x ¾"	50 x 15	750	26.00
CF080	1¼" x 1"	50 x 10	500	21.50
CF081	1½" x 1"	30 x 15	450	36.50
CF086	2" x 1"	35 x 7	245	68.00



Pro. Code	Inch	Inner Pack	Master Packing (Pcs.)	Rate/ pcs
<b>CROSS TEE</b>				
CF092	¾"	50 x 10	500	32.50
CF093	1"	25 x 12	300	59.50
CF094	1¼"	20 x 10	200	97.00



Pro. Code	Inch	Inner Pack	Master Packing (Pcs.)	Rate/ pcs
<b>Nail Clamp</b>				
CF140	¾"	100 x 50	5000	2.70
CF141	1"	100 x 30	3000	4.10
CF142	1¼"	100 x 30	2000	5.20
CF143	1½"			8.00
CF144	2"			12.50



Pro. Code	Volume	Inner Pack	Master Packing (Pcs.)	Rate/ pcs
<b>SOLVENT</b>				
FS01	10 ml.	100 x 20	2000	30.00
FS02	25 ml.	100 x 8	800	52.00
FS03	59 ml.	48 x 10	480	101.50
FS04	118 ml.	24 x 13	312	178.50
FS05	237 ml.	15 x 13	195	316.00

**u-PVC FLOREX GREEN PLUMBING PIPE : ASTMD - 2467**



SCH-40 (3 MTR)				
Pro.Code	Inch	mm	Packing	Rate/pcs
PU001	½"	15	60 Pcs	180.00
PU002	¾"	20	50 Pcs	223.00
PU003	1"	25	30 Pcs	347.00
PU004	1¼"	32	20 Pcs	470.00
PU005	1½"	40	15 Pcs	545.00
PU006	2"	50	10 Pcs	745.00



SCH-80 (3 MTR)				
Pro.Code	Inch	mm	Packing	Rate/pcs
PU013	½"	15	50 Pcs	200.00
PU014	¾"	20	40 Pcs	272.00
PU015	1"	25	30 Pcs	410.00
PU016	1¼"	32	20 Pcs	560.00
PU017	1½"	40	15 Pcs	652.00
PU018	2"	50	10 Pcs	870.00



SCH-40 (6 MTR)				
Pro.Code	Inch	mm	Packing	Rate/pcs
PU007	½"	15	30 Pcs	360.00
PU008	¾"	20	25 Pcs	446.00
PU009	1"	25	15 Pcs	694.00
PU010	1¼"	32	10 Pcs	940.00
PU011	1½"	40	8 Pcs	1090.00
PU012	2"	50	5 Pcs	1490.00



SCH-80 (6 MTR)				
Pro.Code	Inch	mm	Packing	Rate/pcs
PU019	½"	15	25 Pcs	400.00
PU020	¾"	20	20 Pcs	544.00
PU021	1"	25	15 Pcs	820.00
PU022	1¼"	32	10 Pcs	1120.00
PU023	1½"	40	8 Pcs	1304.00
PU024	2"	50	5 Pcs	1740.00

**u-PVC FANOX PLUMBING PIPE : ASTMD - 2467**



SCH-40 (3 MTR)				
Pro.Code	Inch	mm	Packing	Rate/pcs
PU025	½"	15	60 Pcs	141.50
PU026	¾"	20	50 Pcs	182.00
PU027	1"	25	30 Pcs	263.00
PU028	1¼"	32	20 Pcs	373.50
PU029	1½"	40	15 Pcs	454.00
PU030	2"	50	10 Pcs	598.50



SCH-80 (3 MTR)				
Pro.Code	Inch	mm	Packing	Rate/pcs
PU037	½"	15	50 Pcs	172.50
PU038	¾"	20	40 Pcs	233.00
PU039	1"	25	30 Pcs	334.00
PU040	1¼"	32	20 Pcs	465.50
PU041	1½"	40	15 Pcs	557.5
PU042	2"	50	10 Pcs	730.00



SCH-40 (6 MTR)				
Pro.Code	Inch	mm	Packing	Rate/pcs
PU031	½"	15	30 Pcs	283.00
PU032	¾"	20	25 Pcs	364.00
PU033	1"	25	15 Pcs	526.00
PU034	1¼"	32	10 Pcs	747.00
PU035	1½"	40	8 Pcs	908.00
PU036	2"	50	5 Pcs	1197.00



SCH-80 (6 MTR)				
Pro.Code	Inch	mm	Packing	Rate/pcs
PU043	½"	15	25 Pcs	345.00
PU044	¾"	20	20 Pcs	466.00
PU045	1"	25	15 Pcs	668.00
PU046	1¼"	32	10 Pcs	931.00
PU047	1½"	40	8 Pcs	1115.00
PU048	2"	50	5 Pcs	1460.00

**u-PVC BRASS FITTINGS**



Pro. Code	Inch	Inner Pack	Bag Packing (Pcs.)	Rate /pcs
<b>BRASS ELBOW</b>				
UF001	½"	30 x 10	300	41.80
UF002	½" (Light)	40 x 10	400	30.50
UF003	¾"	25 x 7	175	87.50
UF004	1"	15 x 8	120	121.00



Pro. Code	Inch	Inner Pack	Bag Packing (Pcs.)	Rate /pcs
<b>RED. BRASS ELBOW</b>				
UF005	¾" x ½"	30 x 7	210	49.50
UF006	1" x ½"	25 x 8	200	53.00
UF007	1" x ¾"	15 x 10	150	99.00



Pro. Code	Inch	Inner Pack	Bag Packing (Pcs.)	Rate /pcs
<b>BRASS TEE</b>				
UF008	½"	30 x 9	270	49.50
UF009	¾"	15 x 9	135	90.50
UF010	1"	10 x 8	80	143.00



Pro. Code	Inch	Inner Pack	Bag Packing (Pcs.)	Rate /pcs
<b>RED. BRASS TEE</b>				
UF011	¾" x ½"	20 x 7	140	53.00
UF012	1" x ½"	15 x 8	120	72.00
UF013	1" x ¾"	10 x 10	100	114



Pro. Code	Inch	Inner Pack	Bag Packing (Pcs.)	Rate /pcs
<b>BRASS MALE</b>				
UF014	½"	40 x 9	360	52.00
UF015	¾"	35 x 7	245	95.00
UF016	1"	15 x 10	150	125.00
UF017	1¼"	9 x 12	108	251.00
UF018	1½"	6 x 10	60	380.00
UF019	2"	6 x 8	48	608.00



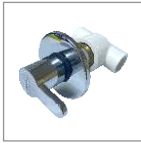
Pro. Code	Inch	Inner Pack	Bag Packing (Pcs.)	Rate /pcs
<b>RED. BRASS MALE</b>				
UF020	¾" x ½"	40 x 8	320	53.20
UF021	1" x ½"	25 x 8	200	76.00
UF022	1" x ¾"	25 x 8	200	114.00



Pro. Code	Inch	Inner Pack	Bag Packing (Pcs.)	Rate /pcs
<b>BRASS FEMALE</b>				
UF023	½"	40 x 10	400	36.50
UF024	¾"	35 x 8	280	83.50
UF025	1"	15 x 12	180	110.00
UF026	1¼"	12 x 11	132	213.00
UF027	1½"	8 x 10	80	273.50
UF028	2"	6 x 8	48	456.00



Pro. Code	Inch	Inner Pack	Bag Packing (Pcs.)	Rate /pcs
<b>RED. BRASS FEMALE</b>				
UF029	¾" x ½"	40 x 8	320	45.50
UF030	1" x ½"	25 x 8	200	64.50
UF031	1" x ¾"	25 x 8	200	91.00



<b>uPVC - FUSION CONCEALED VALVE</b>			
Pro. Code	Inch	Master Box Pack	Rate/Pcs
UF179	½"	24	651.00
UF180	¾"	24	667.00
UF181	1"	24	682.50



<b>½" BRASS HEXAGON</b>			
Pro. Code	Material	Inner Pack	Rate /pcs
UF032	MTA	25 x 10	250
UF033	FTA	25 x 10	250

## u-PVC PLAIN FITTINGS



Pro. Code	Inch	Inner Pack	Master Packing (Pcs.)	Rate/pcs
<b>PLAIN ELBOW</b>				
UF034	½"	100 x 12	1200	7.50
UF035	¾"	65 x 12	780	12.20
UF036	1"	40 x 10	400	19.00
UF037	1¼"	25 x 10	250	33.50
UF038	1½"	16 x 12	192	39.50
UF039	2"	9 x 10	90	78.00



Pro. Code	Inch	Inner Pack	Master Packing (Pcs.)	Rate/pcs
<b>PLAIN TEE</b>				
UF044	½"	60x 12	720	11.50
UF045	¾"	40 x 12	480	18.30
UF046	1"	25 x 12	300	28.00
UF047	1¼"	13 x 12	156	46.00
UF048	1½"	10 x 12	120	54.50
UF049	2"	7 x 10	70	95.00



Pro. Code	Inch	Inner Pack	Master Packing (Pcs.)	Rate/pcs
<b>COUPLER</b>				
UF056	½"	120 x 12	1440	7.50
UF057	¾"	80 x 12	960	11.00
UF058	1"	50 x 12	600	15.50
UF059	1¼"	35 x 10	350	22.50
UF060	1½"	25 x 10	250	28.00
UF061	2"	16 x 10	160	46.50



Pro. Code	Inch	Inner Pack	Master Packing (Pcs.)	Rate/pcs
<b>PLAIN MTA</b>				
UF068	½"	160 x 12	1920	5.50
UF069	¾"	100 x 12	1200	9.00
UF070	1"	70 x 12	840	13.50
UF071	1¼"	35x12	420	24.50
UF072	1½"	30x10	300	32.50
UF073	2"	20x14	280	45.00



Pro. Code	Inch	Inner Pack	Master Packing (Pcs.)	Rate/pcs
<b>45° ELBOW</b>				
UF080	½"	100 x 12	1200	9.00
UF081	¾"	70 x 12	840	15.00
UF082	1"	40 x 12	480	20.00
UF083	1¼"	25 x 10	250	32.00
UF084	1½"	20 x 10	200	43.50
UF085	2"	10 x 10	100	66.50



Pro. Code	Inch	Inner Pack	Master Packing (Pcs.)	Rate/pcs
<b>REDUCE BUSH</b>				
UF104	¾" x ½"	200x14	2800	4.00
UF105	1" x ½"	120x12	1440	8.80
UF106	1" x ¾"	120x12	1440	8.20
UF107	1¼" x ½"	70x12	840	17.6
UF108	1¼" x ¾"	70x12	840	17.6
UF109	1¼" x 1"	70x12	840	13.6
UF110	1½" x ½"	50x12	600	20.5
UF111	1½" x ¾"	50x12	600	21.80
UF112	1½" x 1"	50x12	600	21.00
UF113	1½" x 1¼"	50x12	600	18.50
UF114	2" x ½"	30x12	360	34.00
UF115	2" x ¾"	30x12	360	35.50
UF116	2" x 1"	30x12	360	35.50
UF117	2" x 1¼"	30x12	360	35.50
UF118	2" x 1½"	30x12	360	33.00



Pro. Code	Inch	Inner Pack	Master Packing (Pcs.)	Rate/pcs
<b>REDUCING ELBOW</b>				
UF040	¾" x ½"	70 x 10	700	18.50
UF041	1" x ½"	50 x 10	500	21.00
UF042	1" x ¾"	40 x 12	480	22.00



Pro. Code	Inch	Inner Pack	Master Packing (Pcs.)	Rate/pcs
<b>ELBOW</b>				
UF043	½"(Thread)	100 x 12	1200	11.00
UF178	½"(Heavy)	100 x 12	1200	9.30



Pro. Code	Inch	Inner Pack	Master Packing (Pcs.)	Rate/pcs
<b>REDUCING TEE</b>				
UF050	¾" x ½"	50 x 12	600	18.50
UF051	1" x ½"	30 x 12	360	26.50
UF052	1" x ¾"	25 x 12	300	30.00
UF053	1½" x 1"	10 x 12	120	54.50
UF054	2" x 1"	9 x 10	90	95.00
UF055	2" x 1½"	7 x 10	70	109.00



Pro. Code	Inch	Inner Pack	Master Packing (Pcs.)	Rate/pcs
<b>REDUCING COUPLER</b>				
UF062	¾" x ½"	80 x 14	1120	10.00
UF063	1" x ½"	60 x 14	840	12.00
UF064	1" x ¾"	60 x 12	720	13.50
UF065	1½" x 1"	25 x 12	300	43.50
UF066	2" x 1"	20 x 10	200	46.50
UF067	2" x 1½"	16 x 12	192	53.00



Pro. Code	Inch	Inner Pack	Master Packing (Pcs.)	Rate/pcs
<b>PLAIN FTA</b>				
UF074	½"	160 x 10	1600	7.50
UF075	¾"	80 x 12	960	11.50
UF076	1"	55 x 12	660	17.00
UF077	1¼"	30x12	360	29.50
UF078	1½"	20x12	240	38.50
UF079	2"	15x12	180	51.00



Pro. Code	Inch	Inner Pack	Master Packing (Pcs.)	Rate/pcs
<b>UNION</b>				
UF086	½"	60 x 12	720	20.50
UF087	¾"	40 x 12	480	32.00
UF088	1"	25 x 12	300	40.80
UF089	1¼"	20 x 10	200	71.50
UF090	1½"	12 x 12	144	98.50
UF091	2"	6 x 14	84	143.00



Pro. Code	Inch	Inner Pack	Master Packing (Pcs.)	Rate/pcs
<b>TANK NIPPLE (SOCKET)</b>				
UF098	½"	80 x 12	960	17.60
UF099	¾"	40 x 14	560	30.50
UF100	1"	25 x 14	350	36.00
UF101	1¼"	20 x 12	240	64.50
UF102	1½"	15 x 12	180	81.50
UF103	2"	10 x 12	120	119.00



Pro. Code	Inch	Inner Pack	Master Packing (Pcs.)	Rate/pcs
<b>TANK NIPPLE (PIPE)</b>				
UF092	½"	60 x 12	720	24.50
UF093	¾"	40 x 12	480	32.00
UF094	1"	25 x 14	350	43.00
UF095	1¼"	20 x 10	200	71.00
UF096	1½"	15 x 12	180	90.50
UF097	2"	10 x 12	120	136.00

## u-PVC PLAIN FITTINGS



Pro. Code	Inch	Inner Pack	Master Packing (Pcs.)	Rate/pcs
<b>STEP OVER BEND</b>				
UF137	½"	35x12	420	26.00
UF138	¾"	25x10	250	38.70
UF139	1"	12x12	144	49.00



<b>STEP OVER BEND (MOULDED)</b>				
UF172	½"	40 x 12	480	30.00
UF173	¾"	30 x 10	300	37.00
UF174	1"	15 x 12	180	68.00



<b>BEND</b>				
UF134	½"	40 x 12	480	23.00
UF135	¾"	30 x 10	300	30.00
UF136	1"	18 x 10	180	41.00



<b>NAIL CLAMP</b>				
UF140	½"	100	5000	2.60
UF141	¾"	100	3000	4.00
UF142	1"	100	2000	5.00
UF143	1¼"	50	-	7.50
UF144	1½"	50	-	9.70
UF145	2"	25	-	15.70



<b>CROSS TEE</b>				
UF152	½"	50x12	600	20.50
UF153	¾"	30x12	360	28.50
UF154	1"	20x10	200	31.00



<b>½" LONG PLUG</b>				
Pro. Code	Name	Inner Pack	Master Packing (Pcs.)	Rate/pcs
UF155	White	100 x 18	1800	2.70
UF156	White (Waser)	100 x 18	1800	4.50
UF157	Black	100 x 16	1600	1.80



Pro. Code	Inch	Inner Pack	Master Packing (Pcs.)	Rate/pcs
<b>END CAP</b>				
UF119	½"	200 x 10	2000	5.50
UF120	¾"	150x10	1500	7.80
UF121	1"	100 x 10	1000	11.50
UF122	1¼"	50x12	600	19.00
UF123	1½"	40x10	400	24.80
UF124	2"	25x10	250	39.50



<b>BALL VALVE (Long Handle)</b>				
UF125	½"	2x60	120	87.00
UF126	¾"	2x40	80	107.00
UF127	1"	2x30	60	152.00
UF128	1¼"	2x68	136	266.00
UF129	1½"	2x45	90	342.00
UF130	2"	2x28	56	487.00



<b>BALL VALVE - UNION TYPE</b>				
UF163	½"	2x60	120	91.00
UF164	¾"	2x40	80	113.00
UF165	1"	2x30	60	161.50



<b>BALL VALVE (Short Handle)</b>				
UF160	½"	2x60	120	87.00
UF161	¾"	2x40	80	107.00
UF162	1"	2x30	60	152.00



<b>BALL VALVE THREAD</b>				
UF131	½"	2x60	120	91.00
UF132	¾"	2x40	80	114.00
UF133	1"	2x30	60	166.00



<b>NON RETURN VALVE</b>				
UF175	½"	15 x 10	150	118.00
UF176	¾"	15 x 10	150	124.00
UF177	1"	15 x 10	150	127.00



<b>METAL CLAMP</b>				
UF146	½"	100	3000	4.50
UF147	¾"	100	2500	5.80
UF148	1"	100	2000	8.20
UF149	1¼"	100		12.00
UF150	1½"	100		17.80
UF151	2"	100		25.30

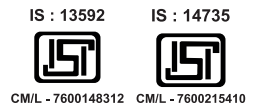


<b>SOLVENT</b>				
FS06	10 ml.	100x20	2000	24.00
FS07	25 ml.	100x12	1200	39.00
FS08	59 ml.	48x10	480	86.00
FS09	118 ml.	24x13	312	152.50
FS10	237 ml.	15x13	195	259.00

**SWR RING-FIT PIPES**



SWR RING FIT - TYPE - A									
Description	FT	Pro. Code	75 mm Per Pipe	Pro. Code	90 mm Per Pipe	Pro. Code	110 mm Per Pipe	Pro. Code	160 mm Per Pipe
Single Socket	10	PR01	407.00	PR02	575.50	PR03	711.50	PR16	1667.00
Double Socket	10	PR04	454.50	PR05	601.50	PR06	762.50	PR17	1756.00
Double Socket	2	PR07	117.50	PR08	157.50	PR09	204.00	PR18	351.00
Double Socket	4	PR10	212.50	PR11	278.50	PR12	359.50	PR19	702.00
Double Socket	6	PR13	293.50	PR14	410.50	PR15	520.50	PR20	1056.00



**SWR RING-FIT FITTINGS**



Pro. Code	STD. Size mm	Box Packing	Rate/ Pcs
BEND 87.5"			
RF001	75	64	63.00
RF002	90	51	101.50
RF003	110	32	126.00
RF004	160	14	346.50



Pro. Code	STD. Size mm	Box Packing	Rate/ Pcs.
BEND 87.5" (DOOR)			
RF005	75	55	70.00
RF006	90	50	129.50
RF007	110	26	152.00
RF008	160	12	407.50



SINGLE TEE 87.5"			
RF009	75	57	94.00
RF010	90	34	147.00
RF011	110	22	171.50
RF012	160	9	516.00



SINGLE TEE (DOOR)			
RF013	75	45	110.00
RF014	110	18	220.00
RF015	160	7	560.00



REDUCE TEE			
RF016	110 X 75	24	171.50
RF017	160 X 110	9	455.00



REDUCE TEE (DOOR)			
RF018	110 X 75	24	259.00



SINGLE 'Y'			
RF019	75	44	140.00
RF020	90	26	206.50
RF021	110	18	240.50



SINGLE 'Y' (DOOR)			
RF022	75	40	170.00
RF023	90	30	245.00
RF024	110	16	270.00



COUPLER			
RF025	75	90	42.00
RF026	90	60	70.00
RF027	110	45	80.00



REDUCER			
RF028	110 X 75	72	98.00



SHOE BEND 45°			
RF029	75	80	59.50
RF030	90	60	87.50
RF031	110	42	105.00

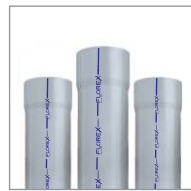


PP RING			
RF032	75	1000	6.60
RF033	90	500	8.00
RF034	110	500	8.60



DOOR CAP + RUBBER RING			
RF037	75	200	21.00
RF038	110	125	37.00

## SWR SELF-FIT PIPES



SWR SELF FIT - TYPE - A									
Description	FT	Pro. Code	75 mm Per Pipe	Pro. Code	90 mm Per Pipe	Pro. Code	110 mm Per Pipe	Pro. Code	160 mm Per Pipe
Single Socket	10	PS01	395.00	PS02	558.50	PS03	690.00	PS04	1457.50
Single Socket	20	PS05	790.00	PS06	1117.00	PS07	1380.00	PS08	2915.50

IS : 13592

IS : 14735



C/M/L - 7600148312

C/M/L - 7600215410

## SWR SELF-FIT FITTINGS



Pro. Code	STD. Size mm	Box Packing	Rate/ Pcs.
BEND 87.5°			
SF001	75	64	59.50
SF002	90	51	94.50
SF003	110	32	119.00
SF004	160	14	327.50



Pro. Code	STD. Size mm	Box Packing	Rate/ Pcs.
BEND 87.5° (DOOR)			
SF005	75	55	64.00
SF006	90	50	122.50
SF007	110	26	156.00
SF008	160	12	386.50



Pro. Code	STD. Size mm	Box Packing	Rate/ Pcs.
SINGLE TEE 87.5°			
SF009	75	57	87.50
SF010	90	34	140.00
SF011	110	22	164.50
SF012	160	9	476.00



Pro. Code	STD. Size mm	Box Packing	Rate/ Pcs.
SINGLE TEE (DOOR)			
SF013	75	45	116.00
SF014	110	18	210.00
SF015	160	7	522.00



Pro. Code	STD. Size mm	Box Packing	Rate/ Pcs.
REDUCE TEE			
SF016	110 X 75	24	161.00
SF017	160 X 110	9	441.00



Pro. Code	STD. Size mm	Box Packing	Rate/ Pcs.
REDUCE TEE(DOOR)			
SF018	110 X 75	20	245.00



Pro. Code	STD. Size mm	Box Packing	Rate/ Pcs.
SINGLE 'Y'			
SF019	75	44	130.00
SF020	90	30	196.00
SF021	110	18	230.00



Pro. Code	STD. Size mm	Box Packing	Rate/ Pcs.
SINGLE 'Y'(DOOR)			
SF022	75	40	160.00
SF023	90	30	234.50
SF024	110	16	260.00



Pro. Code	STD. Size mm	Box Packing	Rate/ Pcs.
COUPLER			
SF025	75	96	36.00
SF026	90	68	55.00
SF027	110	45	72.00



Pro. Code	STD. Size mm	Box Packing	Rate/ Pcs.
REDUCER			
SF028	110 X 75	72	91.00



Pro. Code	STD. Size mm	Box Packing	Rate/ Pcs.
SHOE BEND 45°			
SF029	75	76	52.50
SF030	90	60	80.50
SF031	110	45	94.50



Pro. Code	STD. Size mm	Box Packing	Rate/ Pcs.
N-TRAP			
SF032	75 x 110	42	95.00
SF033	90 x 110	48	110.00
SF034	110 x 110	38	110.00



Pro. Code	STD. Size mm	Box Packing	Rate/ Pcs.
P-TRAP			
SF035	110 x 110	16	250.00
SF036	110 x 125	16	270.00



Pro. Code	STD. Size mm	Box Packing	Rate/ Pcs.
VENT-COWL			
SF041	75	390	17.50
SF042	110	140	28.50



Pro. Code	STD. Size mm	Box Packing	Rate/ Pcs.
S-TRAP			
SF040	110 x 125	12	420.00

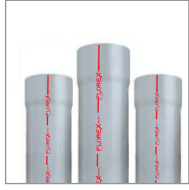


Pro. Code	STD. Size mm	Box Packing	Rate/ Pcs.
MULTIFLOOR TRAP			
SF049	110 x 75 x 50	32	156.50



Pro. Code	STD. Size mm	Box Packing	Rate/ Pcs.
PIPE CLIP			
SF043	75	650	13.50
SF044	90	500	18.00
SF045	110	350	19.50

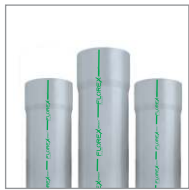
**AGRICULTURE PIPE RATE CHART 20 FEET**



ISI 2.5 KG / CM <sup>2</sup>		
Inch (mm)	Pro. Code	Rate/pcs
4" (110)	PA001	1221
5" (140)	PA002	1870
6" (160)	PA003	2486
8" (200)	PA039	3740



ISI 4 KG / CM <sup>2</sup>		
Inch (mm)	Pro. Code	Rate/pcs
2" (63)	PA004	660
2½" (75)	PA005	880
3" (90)	PA006	1188
4" (110)	PA007	1716
5" (140)	PA008	2860
6" (160)	PA009	3740
8" (200)	PA040	5720



ISI 6 KG / CM <sup>2</sup>		
Inch (mm)	Pro. Code	Rate/pcs
1½" (40)	PA010	440
1½" (50)	PA011	528
2" (63)	PA012	880
2½" (75)	PA013	1210
3" (90)	PA014	1760
4" (110)	PA015	2486
5" (140)	PA016	4180
6" (160)	PA017	5280
8" (200)	PA041	8360



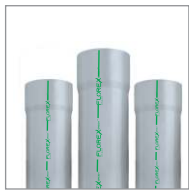
UDS PIPE (SDR 41 / SN - 4)		
Inch (mm)	Pro. Code	Rate/pcs 6kg/cm <sup>2</sup>
4" (110)	PA041	1768
6" (160)	PA042	3855



NON ISI 6 KG / Cm <sup>2</sup>		
Inch (mm)	Pro. Code	Rate/pcs
1½" (50)	PA018	367
2" (63)	PA019	500
2½" (75)	PA020	667
3" (90)	PA021	833
4" (110)	PA022	1167
5" (140)	PA023	1667
6" (160)	PA024	2083
8" (200)	PA042	-



NON ISI 10 KG / Cm <sup>2</sup>		
Inch (mm)	Pro. Code	Rate/pcs
1½" (40)	PA025	400
1½" (50)	PA026	500
2" (63)	PA027	667
2½" (75)	PA028	833
3" (90)	PA029	1083
4" (110)	PA030	1333
5" (140)	PA031	2000
6" (160)	PA032	2500
8" (200)	PA043	6833

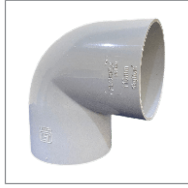


ISI 6 KG / Cm <sup>2</sup> (10 FT)		
Inch (mm)	Pro. Code	Rate/pcs
1½" (40)	PA033	220
1½" (50)	PA034	264



NON ISI 6 KG / Cm <sup>2</sup> (10 FT)		
Inch (mm)	Pro. Code 6 kg/cm <sup>2</sup>	Rate-pcs Non ISI 6 kg/cm <sup>2</sup>
2" (63)	PA035	250
2½" (75)	PA036	333
3" (90)	PA037	417
4" (110)	PA038	583

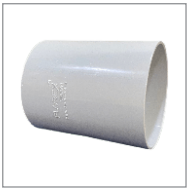
## AGRI FITTINGS (6KG/CM<sup>2</sup>)



ELBOW			
Pro. Code	STD. Size mm	Box Packing	Rate/pcs
AF001	40	260	17.50
AF002	50	140	27.00
AF003	63	75	50.50
AF004	75	75	56.00
AF005	90	55	80.50
AF006	110	30	133.00
AF043	140	13	316.50
AF082	160	-	480.00
AF055	110x90	-	106.00



TEE			
Pro. Code	STD. Size mm	Box Packing	Rate/pcs
AF007	40	170	24.70
AF008	50	95	35.50
AF009	63	60	63.70
AF010	75	55	77.00
AF011	90	36	112.00
AF012	110	22	196.00
AF044	140	10	427.00
AF083	160	-	580.00
AF056	110x75	-	166.00
AF057	110x90	-	174.00



COUPLER			
Pro. Code	STD. Size mm	Box Packing	Rate/pcs
AF013	40	500	11.27
AF014	50	250	16.50
AF015	63	180	29.80



REDUCER COUPLER			
Pro. Code	STD. Size mm	Box Packing	Rate/pcs
AF016	110x90	78	73.50
AF017	110x75	78	70.00
AF018	110x63	78	66.50
AF029	90x75	84	51.00
AF030	90x63	84	50.50
AF031	90x50	84	50.50



AGRI 45° ELBOW			
Pro. Code	STD. Size mm	Box Packing	Rate/pcs
AF040	40	320	15.20
AF041	50	190	22.50
AF042	63	100	34.00



END CAP			
Pro. Code	STD. Size mm	Box Packing	Rate/pcs
SF051	40	50	9.80
SF052	50	25	13.70
SF053	63	20	17.60
SF046	75	162	38.85
SF047	90	115	50.50
SF048	110	72	60.00
SF037	140	54	88.00
SF038	160	40	123.20



PVC SOLVENT				
Pro. Code	Size	Inner Box	Master Box (Pcs)	Rate/pcs
FS11	50 ml.	48x10	480	71.00
FS12	100 ml.	24x13	312	118.00
FS13	250 ml.	15x13	195	204.00
FS14	500 ml.	8x10	80	370.00
FS15	1 Ltr.	6x6	36	682.00

## AGRI FITTINGS (10KG/CM<sup>2</sup>)



ELBOW				
Pro. Code	STD.Size mm	Inner Pack	Master Packing (Pcs.)	Rate/ pcs
AF061	20	100x12	1200	6.50
AF062	25	70x12	840	8.70
AF063	32	40x10	400	13.40



45° ELBOW				
Pro. Code	STD.Size mm	Inner Pack	Master Packing (Pcs.)	Rate/ pcs
AF064	20	100x12	1200	5.70
AF065	25	70x12	840	8.40
AF066	32	40x10	400	12.20



TEE				
Pro. Code	STD.Size mm	Inner Pack	Master Packing (Pcs.)	Rate/ pcs
AF067	20	70x12	840	8.80
AF068	25	50x12	600	12.20
AF069	32	30x12	360	17.20



COUPLER				
Pro. Code	STD.Size mm	Inner Pack	Master Packing (Pcs.)	Rate/ pcs
AF070	20	150x12	1800	4.60
AF071	25	100x12	1200	6.10
Af072	32	60x12	720	8.80



M.T.A				
Pro. Code	STD.Size mm	Inner Pack	Master Packing (Pcs.)	Rate/ pcs
AF073	20	100x10	1000	5.80
AF074	25	60x10	600	7.60
Af075	32	40x10	400	10.70



F.T.A				
Pro. Code	STD.Size mm	Inner Pack	Master Packing (Pcs.)	Rate/ pcs
AF076	20	100x10	1000	6.80
AF077	25	60x10	600	8.00
Af078	32	40x10	400	11.00



END CAP				
Pro. Code	STD.Size mm	Inner Pack	Master Packing (Pcs.)	Rate/ pcs
AF079	20	120x10	1200	3.50
AF080	25	70x10	700	4.60
AF081	32	50x10	500	6.80

## FRP COVER



MANHOLE COVER (WHITE)			
Size	Packing (in Pcs.)	Weight (KG)	Rate
10 X 10	12	2.100	570
12 X 12	10	3.000	759
15 X 15	7	4.500	995
18 X 18	5	7.000	1293
18 X 24	3	10.300	1665
21 X 21	3	11.000	1665
24 X 24	2	13.000	2198



R.R.C. - COUPLER		
Inch	Master Packing (pcs.)	GST Paid Rate
2"	150	67
2½"	100	95
3"	70	132
4"	40	208
5"	25	358
6"	18	517

## GARDEN PIPE



ZEBRA: 30 MTR			
Pro. Code	STD. Size inch(mm)	Master Packing Roll	Rate Pcs.
G01	½" (12)	18	510
G02	¾" (20)	10	884
G03	1" (25)	7	1233
G04	1¼" (32)	5	1955



TRANSPARENT PIPE: 30 MTR			
Pro. Code	STD. Size inch(mm)	Master Packing Roll	Rate Pcs.
G12	½" (12)	18	510
G13	¾" (20)	10	884
G14	1" (25)	7	1233
G15	1¼" (32)	5	1955



BRAIDED: 30 MTR			
Pro. Code	STD. Size inch(mm)	Master Packing Roll	Rate Pcs.
G05	½" (12)	14	735
G06	¾" (20)	8	1070
G07	1" (25)	6	1575
G08	1¼" (32)	4	2600



SUCTION PIPE: 30 MTR			
Pro. Code	STD. Size inch(mm)	Master Packing Roll	Rate Pcs.
G09	¾" (20)	8	1635
G10	1" (25)	6	2013
G11	1¼" (32)	4	2768



HEAVY DUTY METALIC PIPE: 30 MTR			
Pro. Code	STD. Size inch(mm)	Master Packing Roll	Rate Pcs.
G16	½" (12)	12	848
G17	¾" (20)	8	1378
G18	1" (25)	5	1800



HEAVY DUTY BRADIDED: 30 MTR			
Pro. Code	STD. Size inch(mm)	Master Packing Roll	Rate Pcs.
G19	½" (12)	8	1080
G20	¾" (20)	6	1620
G21	1" (25)	4	2160

## AGRI FITTINGS : PN/4



ELBOW			
Pro. Code	STD. Size mm	Box Packing	Rate/pcs
AF019	63	125	32.00
AF020	75	95	36.30
AF021	90	57	50.50
AF022	110	33	75.00
AF023	140	14	205.70
AF053	160	14	244.00



TEE			
Size	STD. Size mm	Box Packing	Rate/pcs
AF024	63	82	42.00
AF025	75	72	48.40
AF026	90	44	67.00
AF027	110	22	112.00
AF028	140	10	286.00
AF054	160	10	363.00

## AGRI FITTINGS : ECO



ELBOW			
Pro. Code	STD. Size mm	Box Packing	Rate/pcs
AF045	63	185	25.30
AF046	75	120	32.00
AF047	90	70	45.00
AF048	110	36	66.00



TEE			
Size	STD. Size mm	Box Packing	Rate/pcs
AF049	63	120	33.00
AF050	75	92	42.50
AF051	90	60	57.00
AF052	110	30	94.50

**EDGE COLLECTION (20 mm)**  
COLOUR: WHITE

**PTMT ALL TAPS COLLECTION**



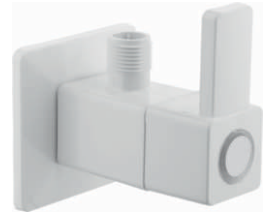
**Bib Cock**

CODE: PT001 | MRP: 208  
INNER: 28 | OUTER: 112



**Pillar Cock**

CODE: PT002 | MRP: 265  
INNER: 24 | OUTER: 96



**Angular Stop Cock**

CODE: PT003 | MRP: 172  
INNER: 56 | OUTER: 224



**Bib Cock Long Body**

CODE: PT004 | MRP: 250  
INNER: 24 | OUTER: 96



**2 Way Bib Cock**

CODE: PT005 | MRP: 396  
INNER: 12 | OUTER: 48



**Sink Cock**

CODE: PT006 | MRP: 475  
INNER: 12 | OUTER: 48



**Swan neck**

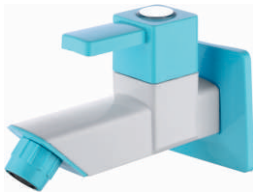
CODE: PT007 | MRP: 501  
INNER: 12 | OUTER: 48



**2 in 1 Angle Cock**

CODE: PT008 | MRP: 475  
INNER: 24 | OUTER: 96

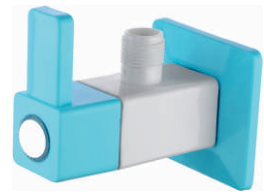
**EDGE COLLECTION (20 mm)**  
COLOUR: WHITE+BLUE



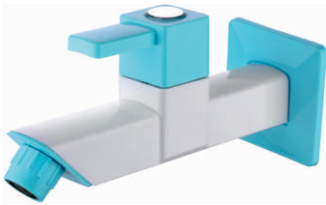
**Bib Cock**  
CODE: PT012 | MRP: 208  
INNER: 28 | OUTER: 112



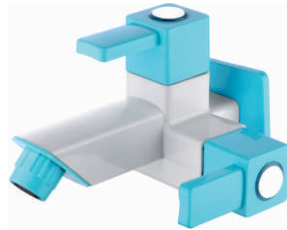
**Pillar Cock**  
CODE: PT013 | MRP: 265  
INNER: 24 | OUTER: 96



**Angular Stop Cock**  
CODE: PT014 | MRP: 172  
INNER: 56 | OUTER: 224



**Bib Cock Long Body**  
CODE: PT015 | MRP: 250  
INNER: 24 | OUTER: 96



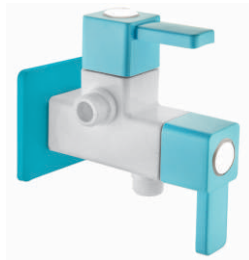
**2 Way Bib Cock**  
CODE: PT016 | MRP: 396  
INNER: 12 | OUTER: 48



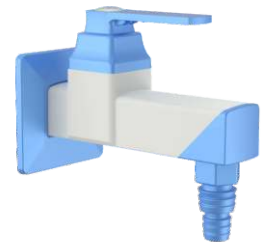
**Sink Cock**  
CODE: PT017 | MRP: 475  
INNER: 12 | OUTER: 48



**Swan neck**  
CODE: PT018 | MRP: 501  
INNER: 12 | OUTER: 48



**2 in 1 Angle Cock**  
CODE: PT019 | MRP: 475  
INNER: 24 | OUTER: 96



**Nozzle Bib Cock**  
CODE: PT020 | MRP: 225  
INNER: 28 | OUTER: 112



**Wall Mixer**  
CODE: PT021 | MRP: 1582  
INNER: - | OUTER: 16

**DIAMOND COLLECTION (15 mm)**  
COLOUR: WHITE



**Bib Cock**  
CODE: PT023 | MRP: 127  
INNER: 48 | OUTER: 192



**Pillar Cock**  
CODE: PT024 | MRP: 185  
INNER: 24 | OUTER: 96



**Angular Stop Cock**  
CODE: PT025 | MRP: 126  
INNER: 56 | OUTER: 224



**Bib Cock Long Body**  
CODE: PT026 | MRP: 167  
INNER: 24 | OUTER: 96



**2 Way Bib Cock**  
CODE: PT027 | MRP: 278  
INNER: 24 | OUTER: 96



**Sink Cock**  
CODE: PT028 | MRP: 340  
INNER: 12 | OUTER: 48



**Swan neck**  
CODE: PT029 | MRP: 344  
INNER: 12 | OUTER: 48



**2 in 1 Angle Cock**  
CODE: PT030 | MRP: 281  
INNER: 28 | OUTER: 112

**DIAMOND COLLECTION (15 mm)**  
COLOUR: WHITE+BLUE



**Bib Cock**  
CODE: PT031 | MRP: 127  
INNER: 48 | OUTER: 192



**Pillar Cock**  
CODE: PT032 | MRP: 185  
INNER: 24 | OUTER: 96



**Angular Stop Cock**  
CODE: PT033 | MRP: 126  
INNER: 56 | OUTER: 224



**Bib Cock Long Body**  
CODE: PT034 | MRP: 167  
INNER: 24 | OUTER: 96



**2 Way Bib Cock**  
CODE: PT035 | MRP: 278  
INNER: 24 | OUTER: 96



**Sink Cock**  
CODE: PT036 | MRP: 340  
INNER: 12 | OUTER: 48



**Swan neck**  
CODE: PT037 | MRP: 344  
INNER: 12 | OUTER: 48



**2 in 1 Angle Cock**  
CODE: PT038 | MRP: 281  
INNER 28 | OUTER: 112



**Nozzle Bib Cock**  
CODE: PT083  
MRP: 144 | INNER: 48  
OUTER: 192

**SMART COLLECTION (15 mm)**  
COLOUR: WHITE+BLUE



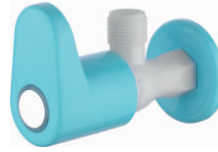
**Bib Cock**

PRO CODE: PT039 | MRP: 122  
INNER: 56 | OUTER: 224



**Pillar Cock**

PRO CODE: PT040 | MRP: 175  
INNER: 56 | OUTER: 224



**Angular Stop Cock**

PRO CODE: PT041 | MRP: 122  
INNER: 56 | OUTER: 224



**Bib Cock Long Body**

PRO CODE: PT042 | MRP: 137  
INNER: 56 | OUTER: 224



**2 Way Bib Cock**

PRO CODE: PT043 | MRP: 300  
INNER: 12 | OUTER: 48



**Sink Cock**

PRO CODE: PT044 | MRP: 348  
INNER: 12 | OUTER: 48



**Swan neck**

PRO CODE: PT045 | MRP: 362  
INNER: 12 | OUTER: 48



**2 in 1 Angle Cock**

PROCODE: PT046 | MRP: 295  
INNER: 28 | OUTER: 112

**STANDARD COLLECTION (15 mm)**  
COLOUR: WHITE+BLUE



**Bib Cock**

CODE: PT048 | MRP: 104  
INNER: 56 | OUTER: 224



**Pillar Cock**

CODE: PT049 | MRP: 157  
INNER: 56 | OUTER: 224



**Angular Stop Cock**

CODE: PT050 | MRP: 104  
INNER: 56 | OUTER: 224



**Bib Cock Long Body**

CODE: PT051 | MRP: 144  
INNER: 56 | OUTER: 224



**2 Way Bib Cock**

CODE: PT052 | MRP: 264  
INNER: 12 | OUTER: 48



**Sink Cock**

CODE: PT053 | MRP: 330  
INNER: 12 | OUTER: 48



**Swan neck**

CODE: PT054 | MRP: 343  
INNER: 12 | OUTER: 48



**2 in 1 Angle Cock**

CODE: PT055 | MRP: 265  
INNER: 28 | OUTER: 112

**LADYBIRD COLLECTION (15 mm)**  
COLOUR: PITCH



**Bib Cock**

CODE: PT088 | MRP: 174  
INNER: 34 | OUTER: 136



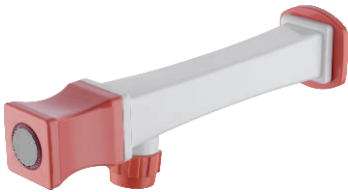
**Pillar Cock**

CODE: PT089 | MRP: 240  
INNER: 24 | OUTER: 96



**Angular Stop Cock**

CODE: PT090 | MRP: 158  
INNER: 34 | OUTER: 136



**Bib Cock Long Body**

CODE: PT091 | MRP: 211  
INNER: 24 | OUTER: 96



**2 Way Bib Cock**

CODE: PT092 | MRP: 337  
INNER: 17 | OUTER: 68



**Sink Cock**

CODE: PT093 | MRP: 403  
INNER: 12 | OUTER: 48



**Swan neck**

CODE: PT094 | MRP: 408  
INNER: 12 | OUTER: 48



**2 in 1 Angle Cock**

CODE: PT095 | MRP: 337  
INNER: 17 | OUTER: 68



**Nozzle Bib Cock**

CODE: PT096 | MRP: 211  
INNER: 34 | OUTER: 136

**LADYBIRD COLLECTION (15 mm)**  
COLOUR: SEA GREEN



**Bib Cock**

CODE: PT097 | MRP: 174  
INNER: 34 | OUTER: 136



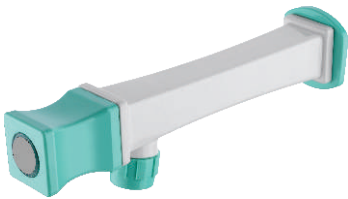
**Pillar Cock**

CODE: PT098 | MRP: 240  
INNER: 24 | OUTER: 96



**Angular Stop Cock**

CODE: PT099 | MRP: 158  
INNER: 34 | OUTER: 136



**Bib Cock Long Body**

CODE: PT100 | MRP: 211  
INNER: 24 | OUTER: 96



**2 Way Bib Cock**

CODE: PT101 | MRP: 337  
INNER: 17 | OUTER: 68



**Sink Cock**

CODE: PT102 | MRP: 403  
INNER: 12 | OUTER: 48



**Swan neck**

CODE: PT103 | MRP: 408  
INNER: 12 | OUTER: 48



**2 in 1 Angle Cock**

CODE: PT104 | MRP: 337  
INNER: 17 | OUTER: 68



**Nozzle Bib Cock**

CODE: PT105 | MRP: 211  
INNER: 34 | OUTER: 136

**CRYSTAL COLLECTION (15 mm)**



**Bib Cock**

PRO CODE: PT057 | MRP: 95  
INNER: 56 | OUTER: 224



**Pillar Cock**

PRO CODE: PT058 | MRP: 197  
INNER: 24 | OUTER: 96



**Angular Stop Cock**

PRO CODE: PT059 | MRP: 93  
INNER: 56 | OUTER: 224



**Bib Cock Long Body**

PRO CODE: PT060 | MRP: 109  
INNER: 56 | OUTER: 224



**2 Way Bib Cock**

PRO CODE: PT061 | MRP: 257  
INNER: 12 | OUTER: 48



**Sink Cock**

PRO CODE: PT062 | MRP: 240  
INNER: 12 | OUTER: 48



**Swan neck**

PRO CODE: PT063 | MRP: 253  
INNER: 12 | OUTER: 48



**Nozzle Bib Cock Short**

PRO CODE: PT064 | MRP: 163  
INNER: 28 | OUTER: 112

**PP FAUCETS (LEGO COLLECTION) 15 mm CERAMIC DISC**



**Bib Cock**

PRO CODE: PT075 | MRP: 71  
INNER: 27 | OUTER: 108



**Bib Cock Long Body**

PRO CODE: PT076 | MRP: 86  
INNER: 17 | OUTER: 68



**Angular Stop Cock**

PRO CODE: PT080 | MRP: 66  
INNER: 54 | OUTER: 216



**Bib Cock (Fusion)**

PRO CODE: PT081 | MRP: 60  
INNER: 27 | OUTER: 108



**Bib Cock (Standard)**

PRO CODE: PT082 | MRP: 60  
INNER: 27 | OUTER: 108

**BATHROOM ACCESSORIES**



**HEALTH FAUCET**

Code	Size	Inner Qty.	Outer Qty.	MRP
PT065	1 Mtr Set	14	56	212
PT066	1.5 Mtr Set	14	56	270
PT084	Only Gun	-	-	92



**4" OVER HEAD SHOWER WHITE**

Code	Size (Mtr)	Inner Qty.	Outer Qty.	MRP
PT067	Round	-	64	225
PT068	Square	-	90	223



**Sink Waste Coupling  
PVC 3" Chock Stop**

CODE: PT077 | MRP: 132  
INNER : 24 | OUTER : 96



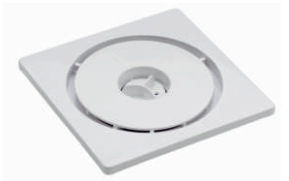
**Sink Waste Coupling  
PVC 4" Chock Stop**

CODE: PT078 | MRP: 168  
INNER : 24 | OUTER : 96

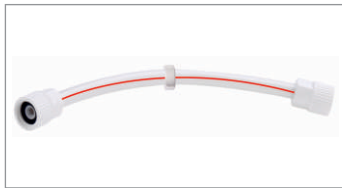


**Waste Coupling  
32 mm Full Thread**

CODE: PT079 | MRP: 76  
INNER : 56 | OUTER : 224



**Floor Trap Alvie  
6 x 6 - White**  
PRO CODE: PT073 | MRP: 76  
INNER : 45 | OUTER : 180



**CONNECTION PIPE**

Pro. Code	STD. Size inch	Inner Qty.	Outer Qty.	MRP
PT069	18	70	280	61
PT070	24	55	200	71
PT071	30	45	180	79
PT072	36	40	160	88



**TAFOLON TAPS**

Code	Size	Inner Pack	Master Pack Box	Rate / Pcs
	10 Mtr.	250	1000	12.70
	12 Mtr.	250	1000	14.70
	15 Mtr.	250	1000	16.00



**COLLAPSIBLE PIPE**

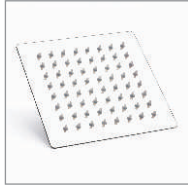
Code	Size	Packing	Rate / Pcs
PT088	42 mm - 120 GMS	75 x 4 = 300	44



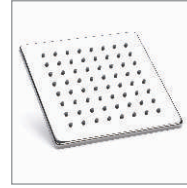
**PTMT BALL COCK**

Code	Size mm	Packing	Rate / Pcs
PT085	15	100	120
PT086	20	100	140
PT087	25	100	160

**S.S. SHOWER COLLECTION**



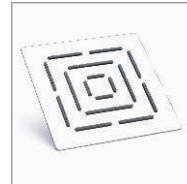
ULTRA SLIM SQUARE			
Pro Code	Size	Box	Rate / Pcs
SS01	4x4	120	237
SS02	6x6	60	371
SS03	8x8	34	611
SS04	10x10	24	894
SS05	12x12	14	1128
SS06	16x16	5	3861



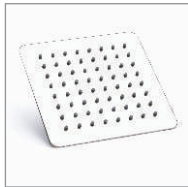
ELEGANCE			
Pro Code	Size	Box	Rate / Pcs
SS13	4x4	120	415
SS14	6x6	60	674
SS15	8x8	34	1010
SS16	12x12	14	2202



ULTRA SLIM ROUND			
Pro Code	Size	Box	Rate / Pcs
SS07	4"	120	243
SS08	6"	60	380
SS09	8"	34	612



THIN MAZE			
Pro Code	Size	Box	Rate / Pcs
SS17	4x4	120	295
SS18	6x6	60	482
SS19	8x8	34	803
SS20	12x12	14	1477



KOLAR			
Pro Code	Size	Box	Rate / Pcs
SS10	4x4	120	295
SS11	6x6	90	482
SS12	8x8	34	803
SS12	12x12	14	1477



SQUARE ARM			
Pro Code	Size	Box	Rate / Pcs
SS21	9"	168	200
SS22	12"	210	265
SS23	15"	98	330
SS24	18"	84	397
SS24	24"	63	528

**FLUSHING CISTERN**



**Classic Side Handle**  
CODE: FC01 | MRP / PCS: 780  
TANK : 10 Ltr. | PACK : 10



**Front Push**  
CODE: FC02 | MRP / PCS: 945  
TANK : 8.5 Ltr. | PACK : 10



**Gold Dual Flushing**  
CODE: FC03 | MRP / PCS: 1225  
TANK : 10 Ltr. | PACK : 10



**Platinum Dual Flushing**  
CODE: FC04 | MRP / PCS: 1350  
TANK CAP : 10 Ltr. | PACK : 10



SEAT COVER			
Code	Pro. Name	Packing	Rate / Pcs
FC05	EWC Slim	20	360
FC06	EWC Heavy	20	380
FC07	Anglo Indian EWC Heavy	20	420
FC08	Soft Close	20	635

**FLOREX** GREEN<sup>®</sup>  
FIT है HIT है

**cPVC  
AGRI**

**PIPE &  
FITTINGS**

**uPVC  
SWR**



**FLOREX** GREEN®  
FIT है HIT है

Stronger Pipes...  
Stronger Bonds...

